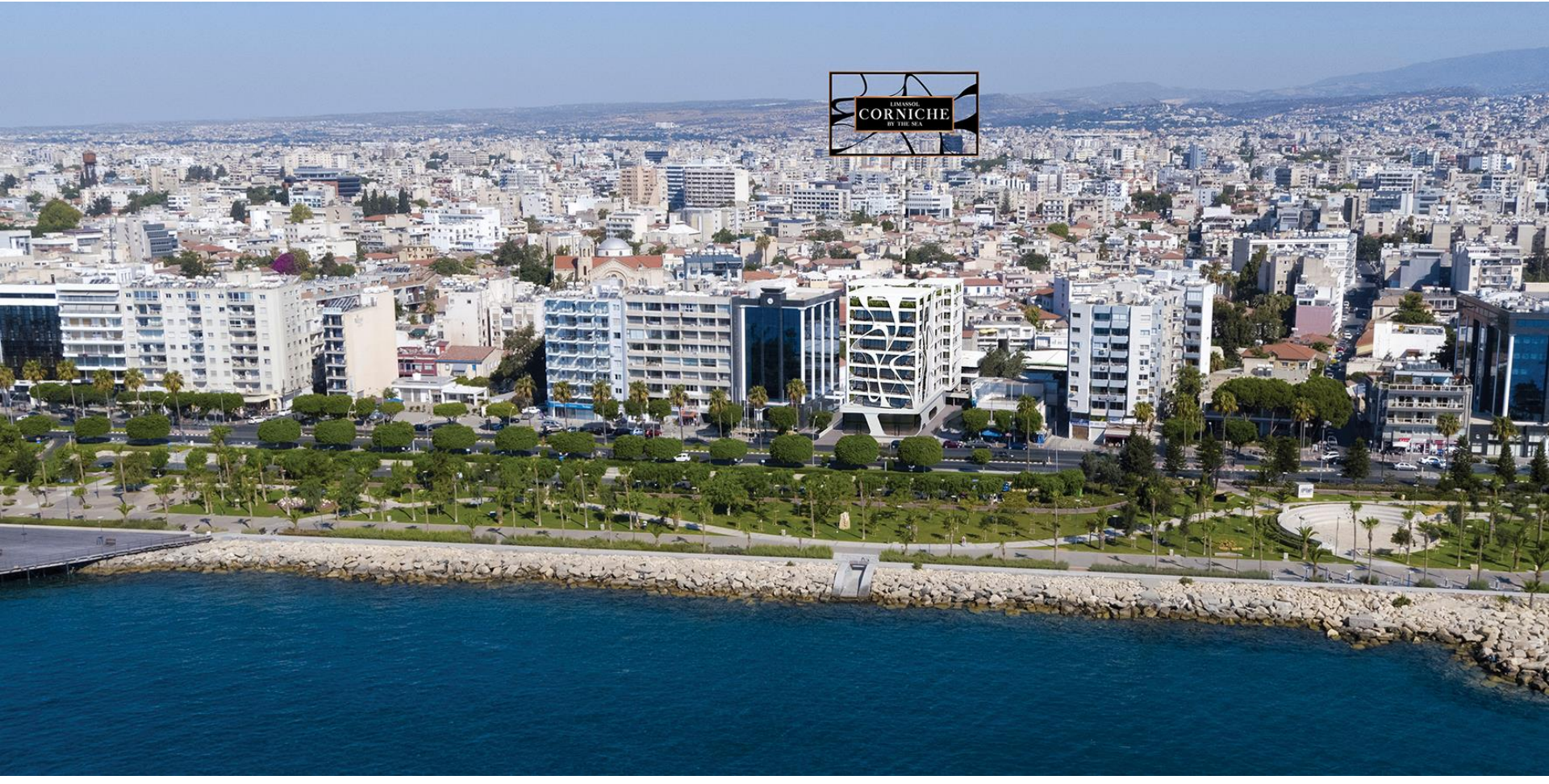




LIMASSOL
CORNICHE
BY THE SEA







The new face of Limassol's seafront



Location

Situated right on the bustling seafront promenade, with sweeping views of Limassol's coastline, the Zavos Corniche Tower is the new kid on the block that is sure to impress. With its façade of futuristic waves, reminiscent of Limassol's shores, the 7-floor building features spacious, modern residences and space for two retail stores on the ground floor. The Limassol seafront promenade, 'Molos,' as it's commonly referred to by the locals, offers palm-fringed walkways against a backdrop of a sandy beaches, whilst the lively streets flanking the seaside trail offer a range of options, from cafes, restaurants, vibrant nightlife, a range of high end stores and business centers. A stone's throw from the Limassol city center, residents can gaze out at the seemingly endless blue and breathe in the salty air, and yet feel comfort in the fact that they are right in the middle of the action.

With a modern outline that mimics the ebbs and flows of the tide, the Corniche Tower is the epitome of contemporary architecture. The building utilizes KRIONR, a state-of-the-art, innovative material used for projects with Solid Surface façades. The KRION ventilated façade system adapts perfectly to cladding, and allows for the creation of the whirls, curves, and engraved features that make the Corniche Tower so unique. In addition to its distinctive malleability, KRION is also hygienic, unreactive, non-toxic, virtually fireproof, easy to maintain and repair, and a high resistance to chemical agents or the weather.

Uninterrupted sea views

The building's seven floors hold a total of 22 apartments of varying sizes, carefully arranged to ensure maximization of space and generous living areas. The third and fifth floors comprise four three-bedroom apartments, while the remaining floors hold two three-bedroom apartments, and one larger four-bedroom apartment. The three-bedroom apartments consist of an en-suite master bedroom, one bathroom and one guest washroom, while the larger four-bedroom apartment boasts four en-suite rooms and one guest washroom. Each apartment also includes two private parking spaces, while the penthouses also boast luscious, landscaped roof gardens.

Luxury Living

Residents can enjoy a wealth of amenities eponymous with luxury living. Relax and unwind at the swimming pool, or work out at the state-of-the-art gym, all the while knowing that anything you need is right at your fingertips with 24-hour concierge service on hand. Controlled access adds an extra layer of security to the premises, ensuring residents' peace of mind.

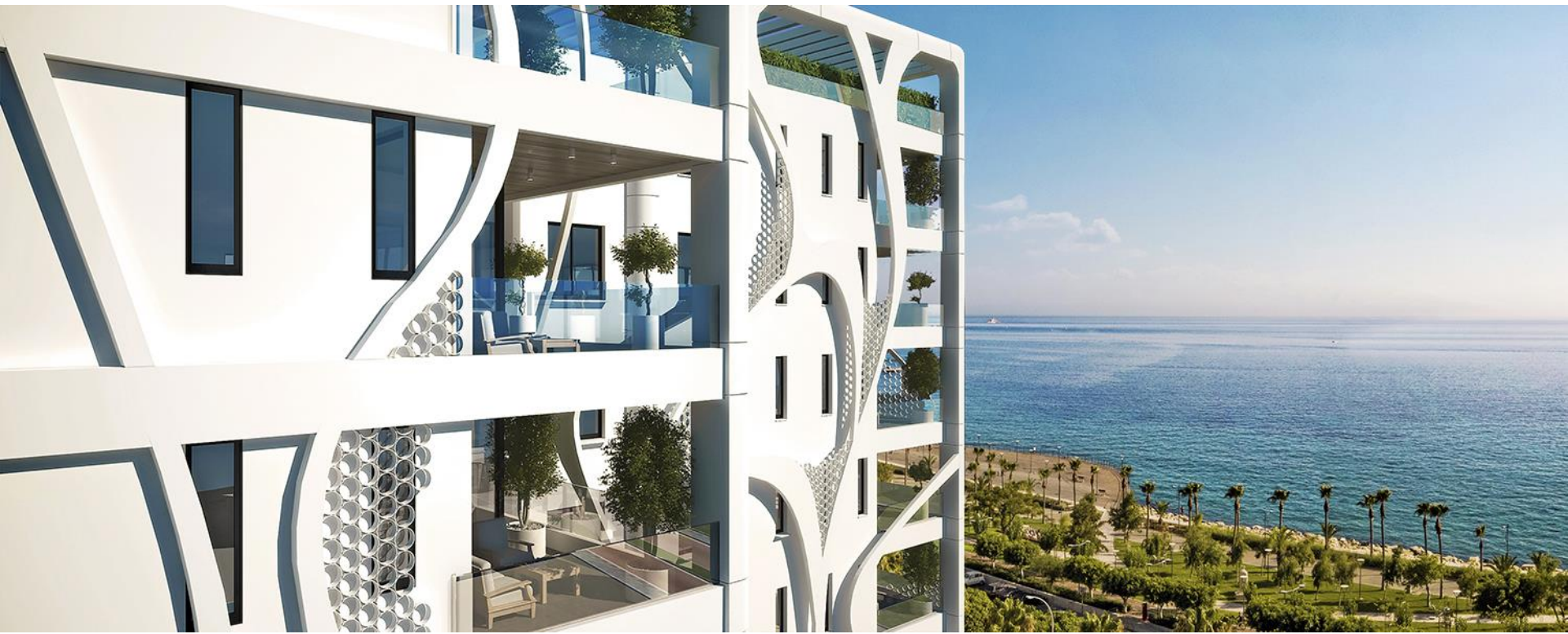
Perfect utilization of space

Every apartment is constructed with generous proportions, using top quality building materials and finished to the highest of standards. The residences feature comfortable open plan living areas that extend onto large, ample balconies that serve up breathtaking views of the azure coastline. Large, carefully placed windows allow an abundance of natural light to stream in, while the bedrooms and living spaces are strategically planned to ensure utmost comfort and a perfect utilization of space.







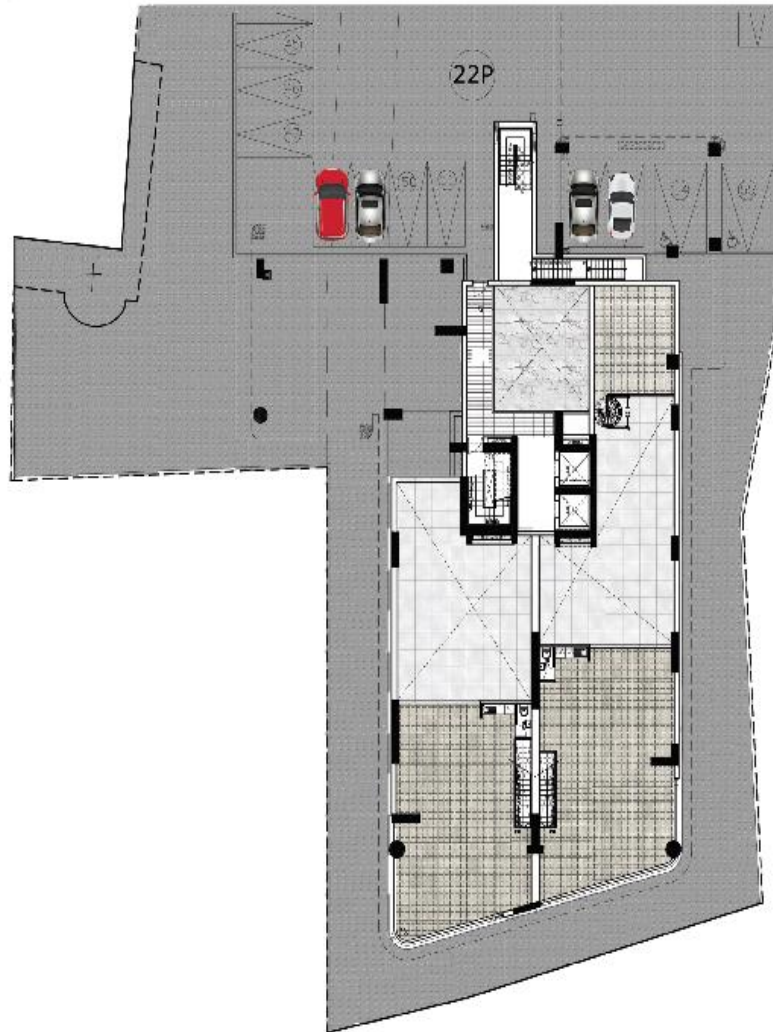




Ground Floor Plan



Mezzanine Floor Plan



Floor Plan - 1st



Typical Floor Plan - 2nd, 4th, 6th & 7th



1st Floor plan



Apt. 101

Limassol Corniche

1st Floor plan



Apt. 102



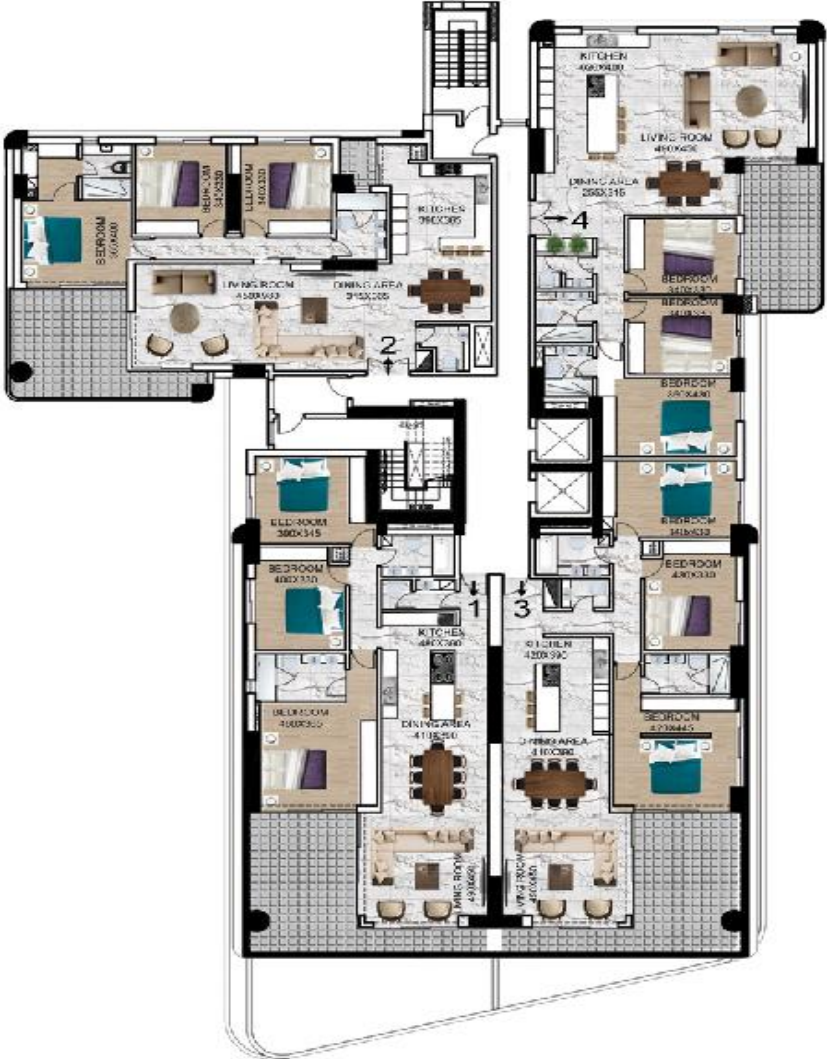
Limassol Corniche

1st Floor plan



Apt. 103

Typical Floor Plan - 3rd & 5th



Limassol Corniche

3rd Floor plan



Apt. 301

Limassol Corniche

3rd floor plan



Apt. 302



Limassol Corniche

3rd Floor plan



Apt. 303

Limassol Corniche

3rd Floor plan



Apt. 304

LIMASSOL CONRICHÉ



The Corniche