



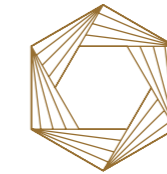
LIMASSOL DEL MAR

THE SIGNATURE COLLECTION

FURNISHED BY

GIANFRANCO
FERRE
HOME





THE SIGNATURE COLLECTION

FURNISHED BY GIANFRANCO FERRÉ HOME

The Signature Collection at Limassol Del Mar is a limited edition, handpicked selection of exceptional residences with bespoke interiors by the revered Gianfranco Ferré Home.

Your own chance to invest in an exclusive future icon.

Renowned for furnishing some of the most exclusive prime properties in the world, Gianfranco Ferré Home is famous for creating timeless collections that exude prestige and elegance, with an emphasis on the finest materials, colours and tones.

Representing an inspired collaboration between design and architecture, the beautiful two to six bedroom residences will bring Gianfranco Ferré Home to Cyprus for the first time, giving residents exclusively designed, limited edition pieces.

Homes in The Signature Collection boast an upgraded specification, with an uncompromising level of quality and finish to produce a beguiling living proposition. Each furniture piece is also personally signed by Gianfranco Ferré Home, creating a truly unique and timeless asset.







A World Class Destination

Situated on one of Cyprus' most beautiful and sought-after shorelines, this limited collection of new homes is surrounded by expansive terracing with lush planting and ornate pools, all with magnificent uninterrupted sea views. The unrivalled location puts buyers at the heart of everything Limassol has to offer – combining the best of cosmopolitan, global city living with old town charm.

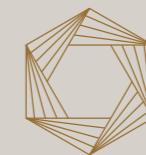


An Icon, Inspired by the Sea

"Our vision was inspired by the entrancing landscape of the Cypriot coastline. We wanted to create a unique residential address and very special experience; we wanted to translate the beauty of the Troodos Mountains and the Mediterranean Sea into architectural form. With its undulating silhouette, the design gracefully echoes the rhythm of the landscape while bringing the magic of the sea into the development. Generous terracing and outdoor pools complete the sense of place.

Our design celebrates the many reasons why people have wanted to visit this part of the world for centuries."

John Dawes, Chief Architect



LIMASSOL DEL MAR

THE SIGNATURE COLLECTION

FURNISHED BY

GIANFRANCO
FERRE
HOME



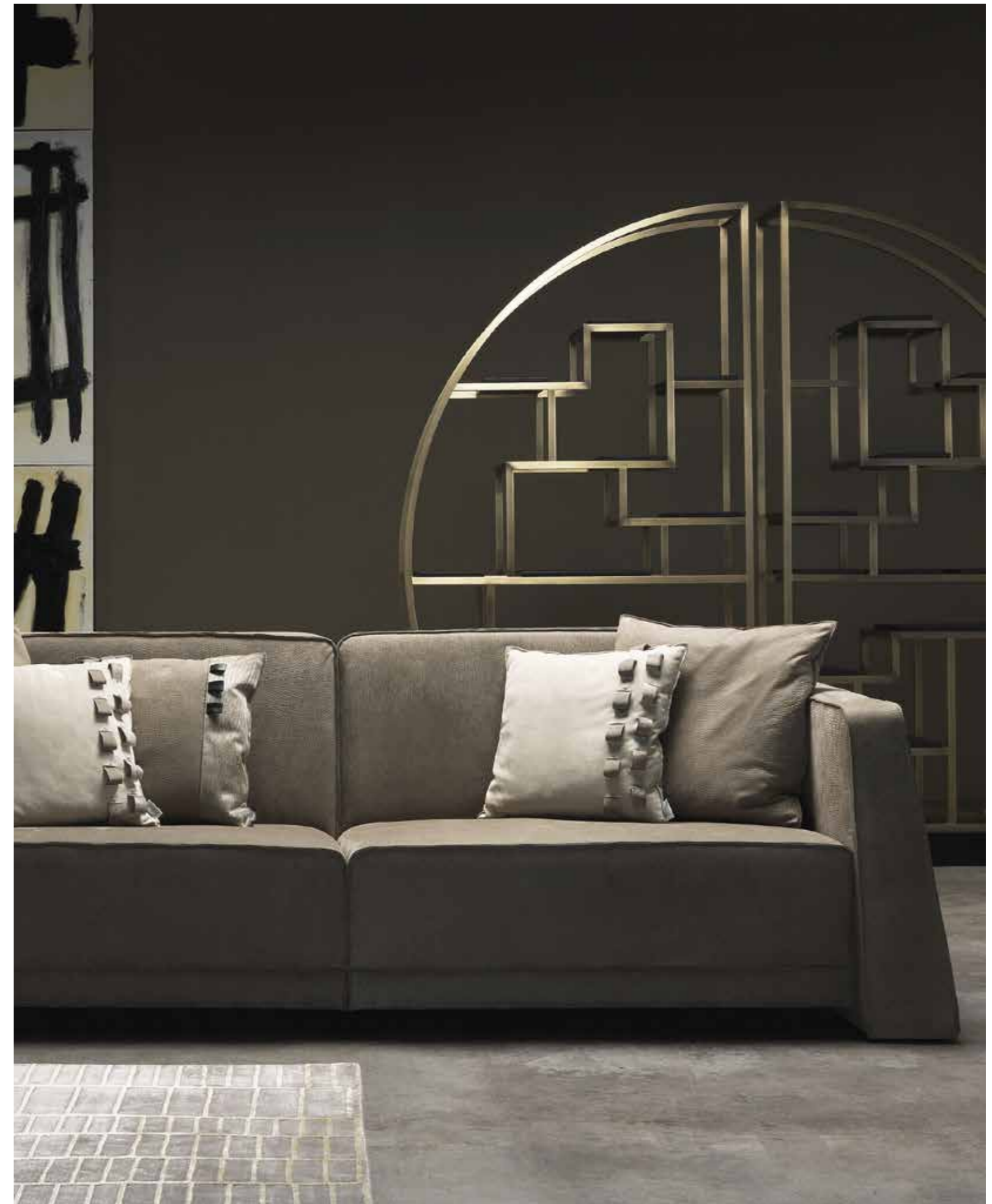
Gianfranco Ferré Home Interiors



FURNISHED BY
**GIANFRANCO
FERRE**
HOME

Gianfranco Ferré was globally renowned as the “architect of fashion” – a foremost icon of Italian style and a genius of geometric patterns. Gianfranco Ferré Home continues this legacy, creating timeless collections across the globe that combine creative flair with upmost levels of finish and uncompromising execution. Its collections become icons in their own right – with style that goes beyond trends and where elegance is always protagonist.

For The Signature Collection, Gianfranco Ferré Home has meticulously conceived a visual lexicon that complements the iconic architecture of the building. Offering a refinement of delicate colours and tones which complement the exquisite level of detail in every finish, the interior design and furnishing creates truly exceptional spaces for living.





LIMASSOL DEL MAR



THE SIGNATURE COLLECTION



LIMASSOL DEL MAR



THE SIGNATURE COLLECTION



LIMASSOL DEL MAR



THE SIGNATURE COLLECTION



LIMASSOL DEL MAR



THE SIGNATURE COLLECTION



The Location

Perfectly Placed



MEDITERRANEAN SEA

LIMASSOL DEL MAR



THE SIGNATURE COLLECTION



LIMASSOL DEL MAR IS ONLY:

- 35 mins Larnaca Airport ✈
- 35 mins from Pafos Airport ✈
- 40 mins to Troodos mountains
- 2 mins to highway exits



An International City



Offering 300 days of sunshine a year and a coastline stretching as far as the eye can see, you may forget you are in a thriving cosmopolitan city that is extremely well connected to Europe, the Middle East and Asia.

A stroll through Limassol's elegant old quarter, surrounded by authentic tavernas and a medieval castle, remind you that this is a special place with heritage - a juxtaposition where history and modernity blend seamlessly.



The Lifestyle



The Limassol Lifestyle



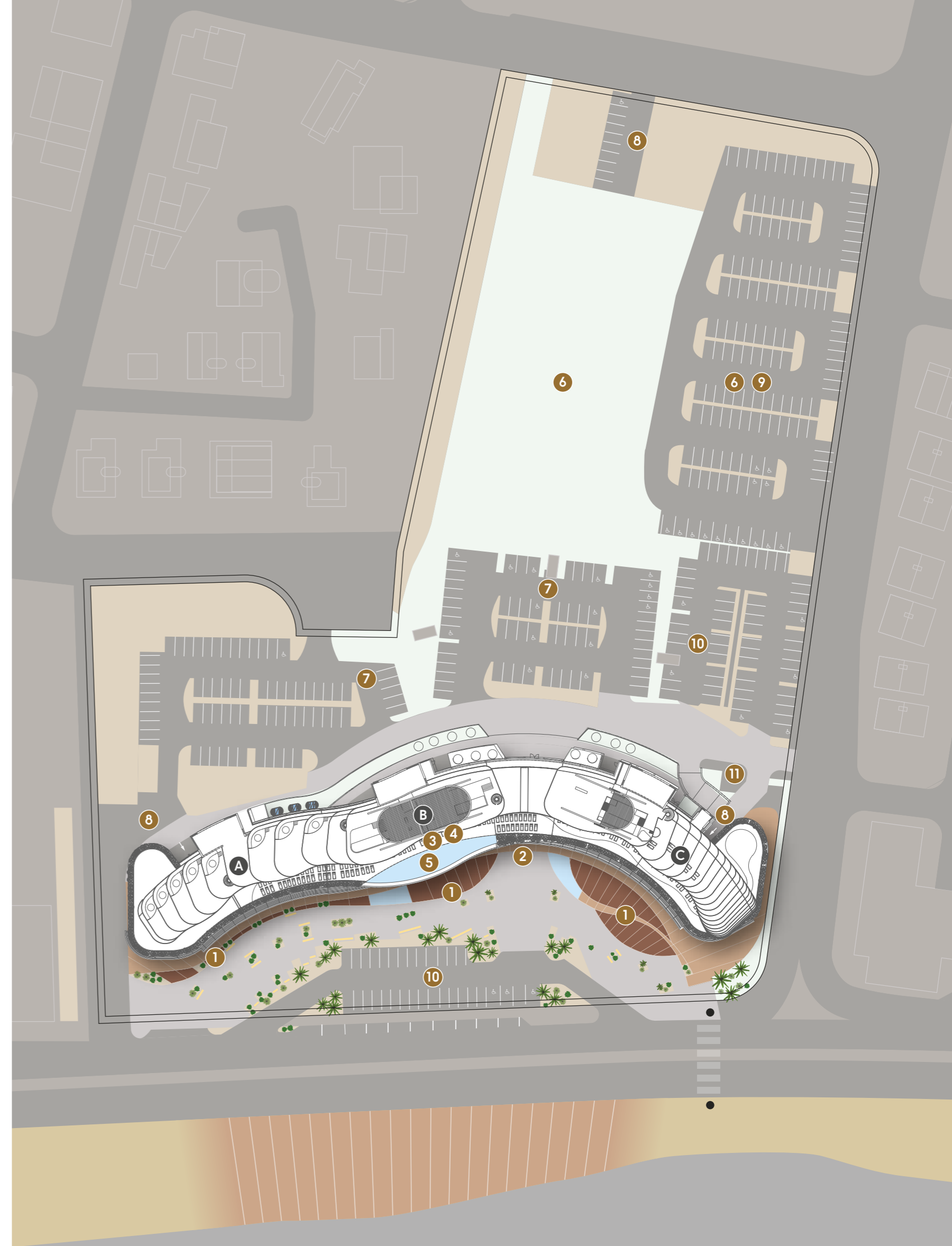
While Nicosia is the capital of Cyprus, Limassol is the island's beating heart. From chic promenades to ancient monuments, distinct local flavours and the legendary Cypriot hospitality, this is a place where old and new blend perfectly to create a lifestyle often sought after but rarely found.

The Masterplan

Located at the heart of the popular 17km-long coastline promenade, the transformational Limassol Del Mar is raising the bar for development in Cyprus. Positioned on an expansive plot of 34,000 sq. m and spanning 170 meters of sea frontage, its outlook will provide magnificent sea views from the ground to top floors.

Situated close to the most prestigious residential enclaves and five-star hotels, the development will provide a new architectural icon for Limassol's seafront, nestled amongst beautiful, lush landscaping. Allocated parking is provided for all residents, ensuring convenience and a hassle-free lifestyle.

- A BUILDING A RESIDENCES - SOLD OUT
- B BUILDING B RESIDENCES - SOLD OUT
- C THE SIGNATURE COLLECTION RESIDENCES
- 1 LE PLAZA DEL MAR
- 2 MAIN ENTRANCE
- 3 SPA/GYM/SAUNA/INDOOR POOL
- 4 RESIDENTS LOUNGE
- 5 OUTDOOR POOL
- 6 LAND FOR FUTURE DEVELOPMENT
- 7 RESIDENTS PARKING
- 8 RESIDENTS UNDERGROUND PARKING
- 9 PUBLIC USE PARKING
- 10 COMMERCIAL USE PARKING
- 11 GUARD HOUSE





Le Plaza Del Mar



LIMASSOL DEL MAR

THE SIGNATURE COLLECTION



At ground level, the Le Plaza Del Mar is set to become Cyprus' most exciting new mixed-use destination, offering world-class restaurants, a cigar lounge, wine bar and café, alongside the best in designer boutiques and high end retail outlets.

A Culinary Hotspot



Food lovers are spoilt for choice in Limassol, with an abundance of restaurants and celebrated eateries, making the city the hub of the island's burgeoning food scene.

The dining experience in the area offers something for everyone, from traditional tavernas serving the finest local cuisine to globally renowned chefs creating new and exciting menus that raise the culinary bar for global tastes.



A Five Star Development





Exceptional Service from the Outset

The world-class services at Limassol Del Mar are as unobtrusive as possible, while remaining fully accessible.

24 hour services are available from our experienced concierge, always on hand to cater to your requests, from booking restaurants and taxis to organising cleaning services.

The residences at Limassol Del Mar are in a secure gated environment, with monitored but discreet security systems. Underground and surface parking is provided to residents and access is strictly controlled, ensuring you can come and go with absolute peace of mind.



LIMASSOL DEL MAR



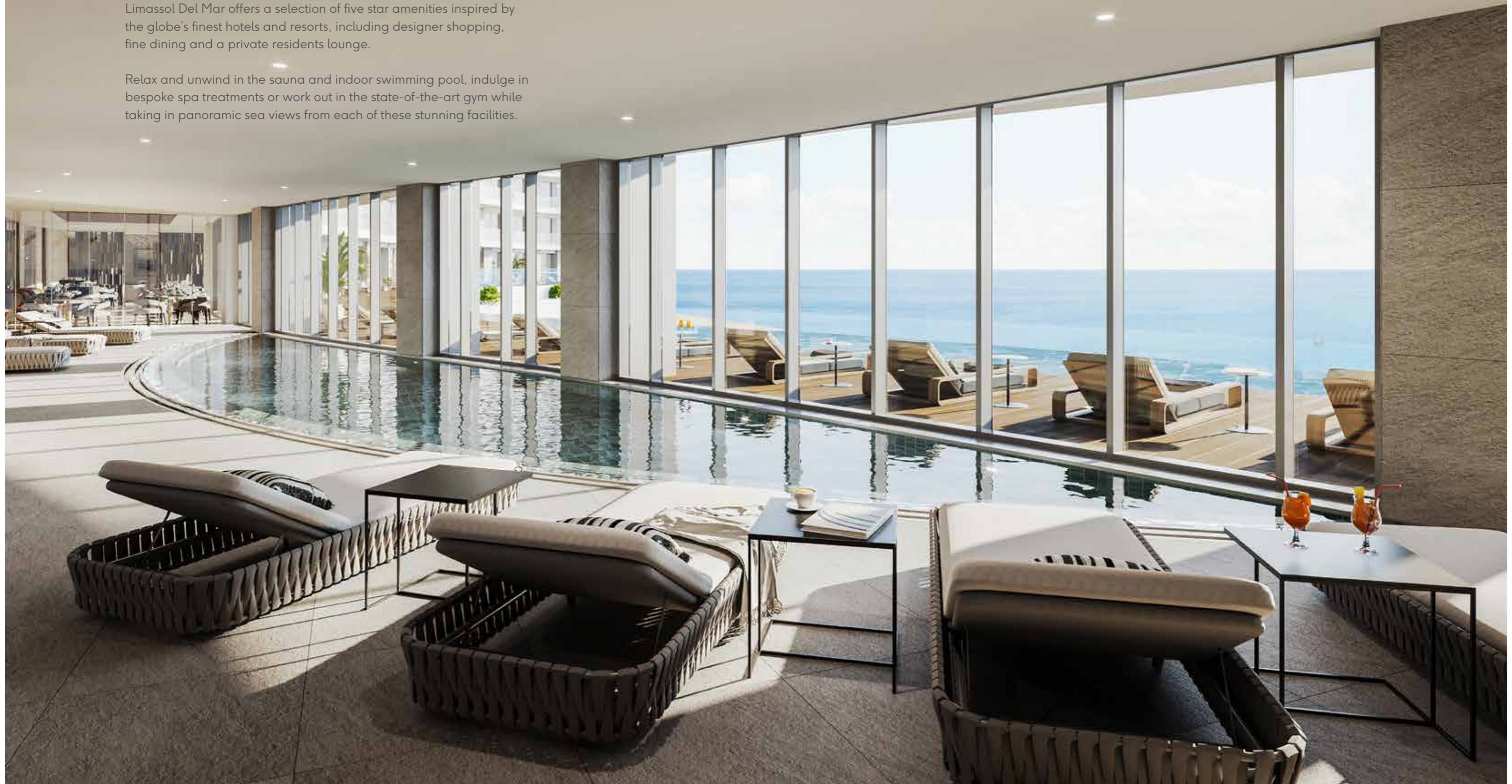
THE SIGNATURE COLLECTION



A Wealth of Amenities

Limassol Del Mar offers a selection of five star amenities inspired by the globe's finest hotels and resorts, including designer shopping, fine dining and a private residents lounge.

Relax and unwind in the sauna and indoor swimming pool, indulge in bespoke spa treatments or work out in the state-of-the-art gym while taking in panoramic sea views from each of these stunning facilities.





LIMASSOL DEL MAR



THE SIGNATURE COLLECTION



LIMASSOL DEL MAR



THE SIGNATURE COLLECTION

Attention to Detail





Raising the Bar

This inspired collaboration with Limassol Del Mar is bringing Gianfranco Ferré Home's unique pieces to Cyprus for the first time, exclusively designed for residents of The Signature Collection.

Each room has been upgraded to offer the highest specification, with a focus on the finest materials, finishes and furnishing to deliver sophisticated elegance throughout.



KITCHEN

- Bespoke Italian Arclinea kitchen
- Solid core cabinets with soft close doors and draws
- Miele and Bosch integrated appliances
- Ceasarstone Franke stainless steel under counter sink and three way mixer tap
- Marble or tile floors

Arclinea



*all of the above will be subject to architectural design and detailing and may be substituted with similar brands.



BATHROOMS

- Marble or tile flooring
- Custom made vanity cupboard with corian or reconstructed granite worktop
- Vileroy & Boch, Duravit or similar sanitary ware
- New Form or Hansgrohe taps and mixers





LIGHTING

Entrance and balcony ceiling lights. Internal ceilings with high quality basic PVC fittings.

SOCKETS & SWITCHES

Double electric sockets and two way switches according to design. Shaving point in master bathroom.

ELECTRICAL

HEATING & COOLING

Under floor heating throughout. A.C. system in all main reception rooms and bedrooms can be used for cooling and heating. A heated towel rail in bathrooms.

COMMUNICATION

Telephone points in living area, kitchen and bedrooms. Colour video phone connected to main lobby entrance and doorbell. Wi-fi points to cover all main areas.

SECURITY

Security alarm system.

ENTERTAINMENT

Central Satellite TV.

SMART HOME

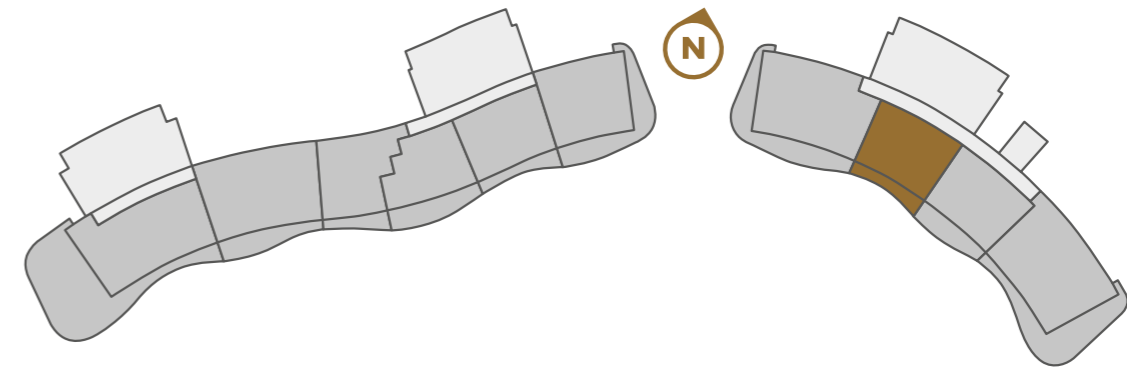
Basic smart home system.



*all of the above will be subject to architectural design and detailing and may be substituted with similar brands.



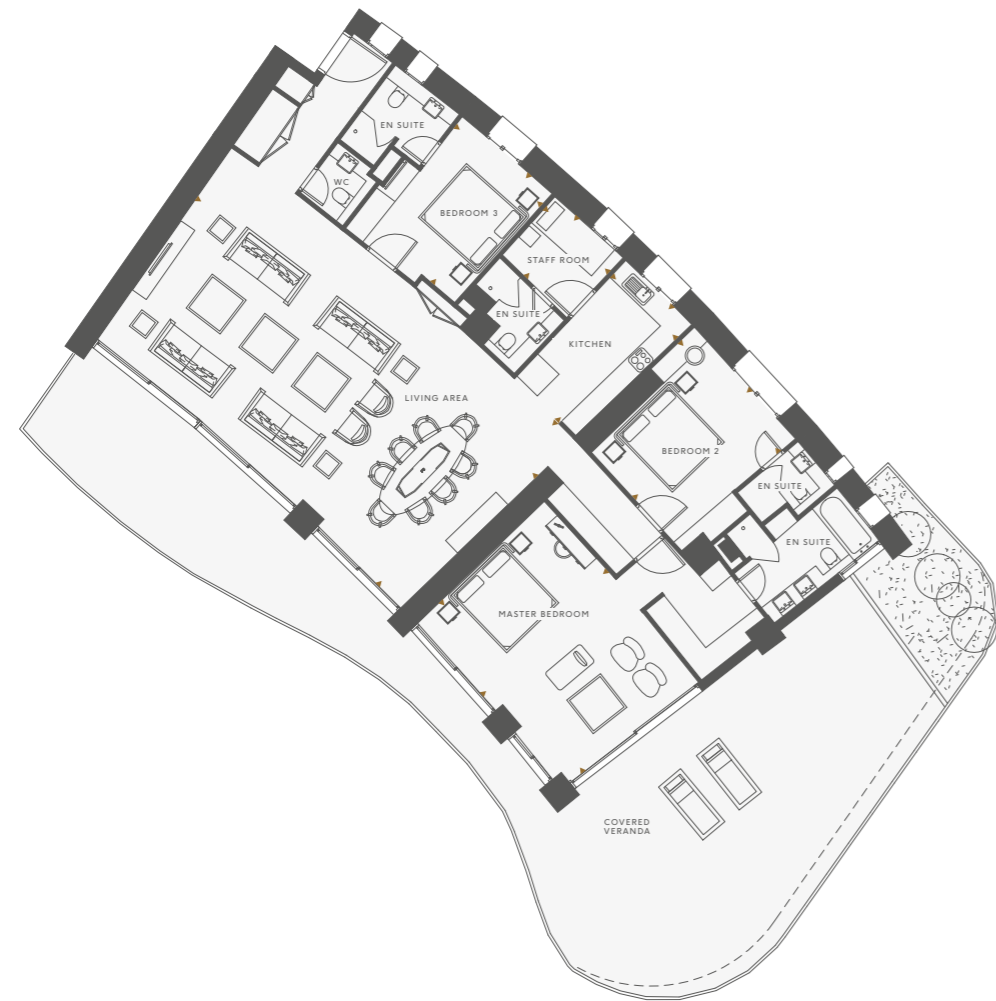
The Floorplans



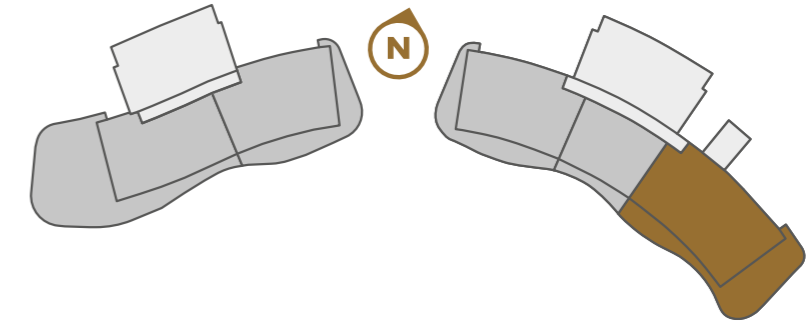
TWO BEDROOM

ALL AREAS	225.31 sq m
TOTAL COVERED	129.87 sq m
INTERNAL AREA	112.31 sq m
COVERED VERANDA	17.56 sq m
COMMON	95.44 sq m
ALLOCATED PARKING	B31E

VIEWS OVER THE MEDITERRANEAN SEA

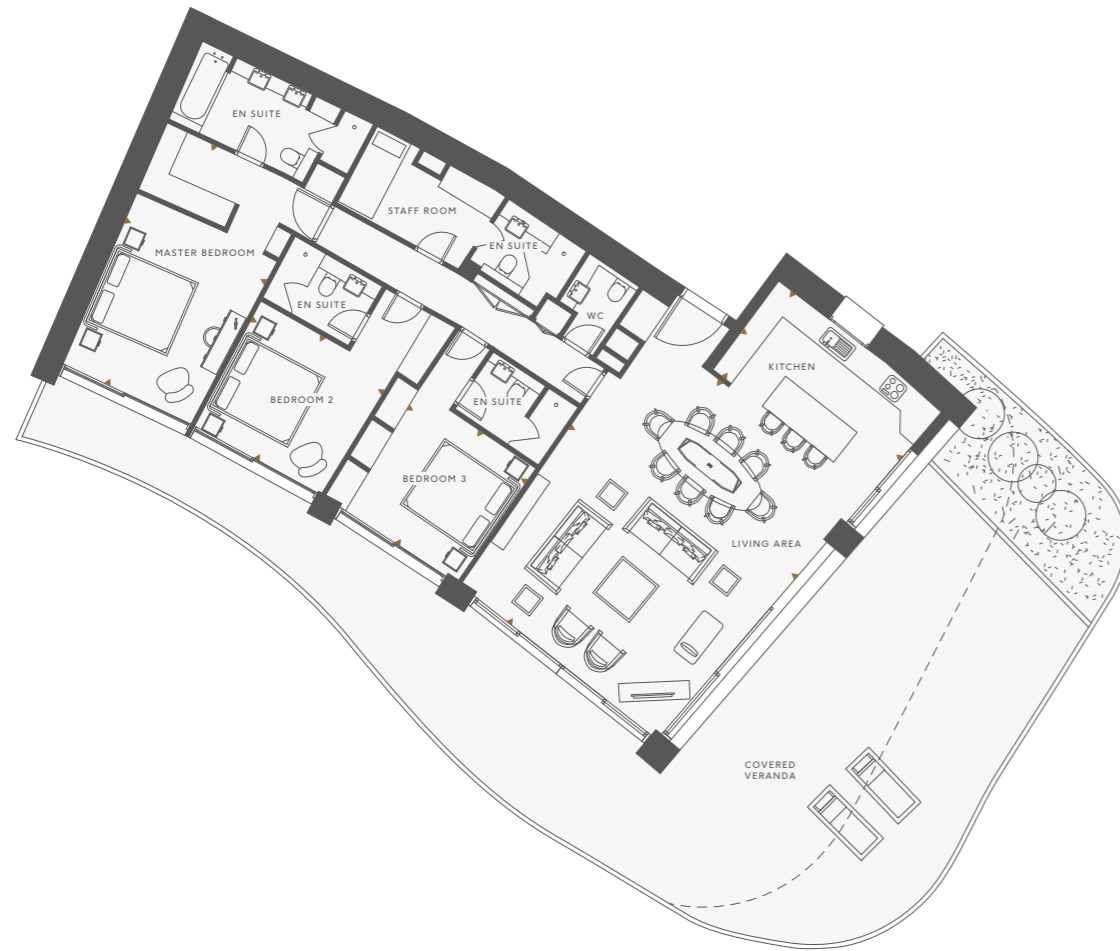


VIEWS OVER THE MEDITERRANEAN SEA

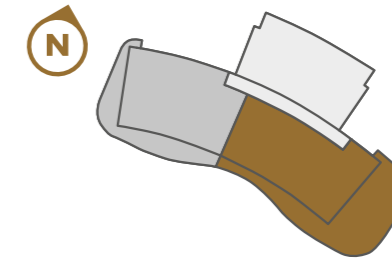


THREE BEDROOM

ALL AREAS	494.87 sq m
TOTAL COVERED	281.34 sq m
INTERNAL AREA	209.21 sq m
COVERED VERANDA	72.13 sq m
UNCOVERED VERANDA	19.75 sq m
COMMON	171.03 sq m
ALLOCATED PARKING	B1E-B2E



VIEWS OVER THE MEDITERRANEAN SEA

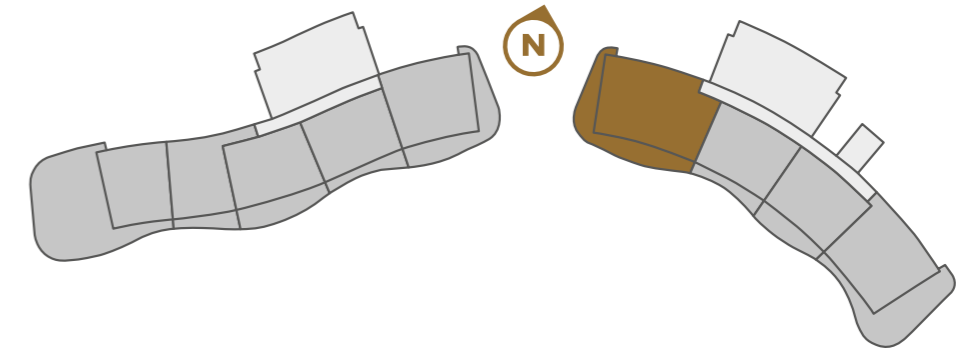


THREE BEDROOM

ALL AREAS	479.26 sq m
TOTAL COVERED	264.06 sq m
INTERNAL AREA	178.69 sq m
COVERED VERANDA	85.20 sq m
COMMON	168.43 sq m
ALLOCATED PARKING	B70-B71

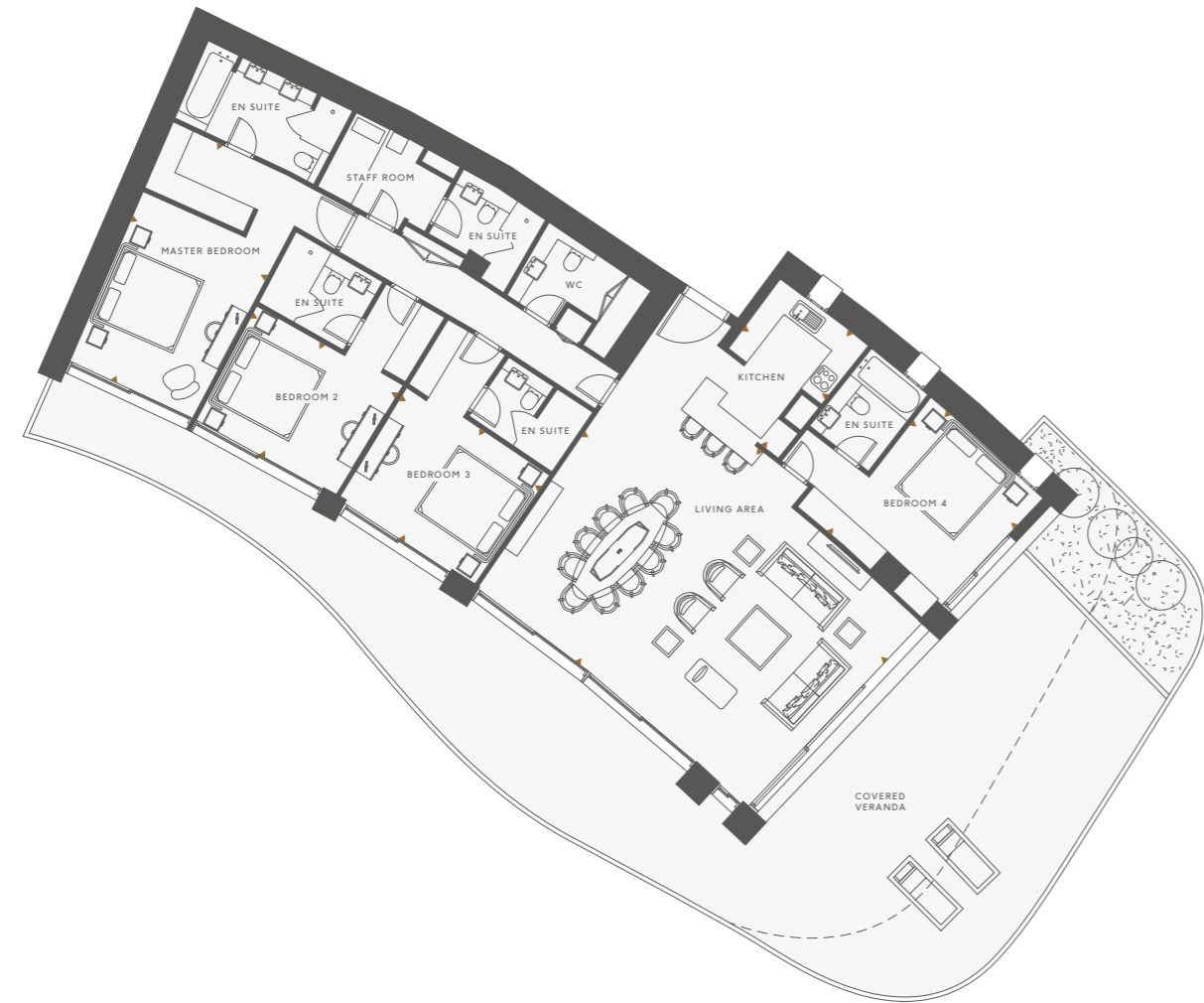


VIEWS OVER THE MEDITERRANEAN SEA

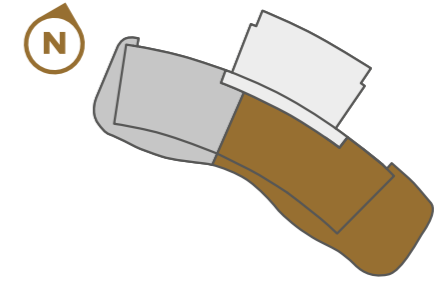


FOUR BEDROOM

ALL AREAS	389.43 sq m
TOTAL COVERED	238.02 sq m
INTERNAL AREA	174.92 sq m
COVERED VERANDA	63.10 sq m
COMMON	143.31 sq m
ALLOCATED PARKING	B74E-R101



VIEWS OVER THE MEDITERRANEAN SEA



FOUR BEDROOM

ALL AREAS	534.76 sq m
TOTAL COVERED	299.92 sq m
INTERNAL AREA	213.72 sq m
COVERED VERANDA	85.84 sq m
COMMON	192.41 sq m
ALLOCATED PARKING	B32-B31



A Passion for Success



The Development Team

We are responsible for creating this extraordinary development is a collection of world-renowned architects, designers, engineers and visionaries.

Each and every collaborator boasts vast international experience and a shared passion for conceiving and delivering the exceptional in terms of quality and aesthetic.

CYPEIR PROPERTIES LTD

A Visionary Partnership

Cypeir Properties Ltd is a joint venture between two of the most renowned developers in Cyprus, and together they are delivering Limassol Del Mar.

The Leptos Group has been a leader in the Cyprus economy for over 60 years. Its diversified presence covers the areas of property development, construction, hotels, property management, travel and tourism, insurance brokerage, healthcare and education. Today the company operates offices in Paphos, Limassol, Nicosia, London, Moscow, St. Petersburg, Kiev, Beijing, Dubai, Shanghai, Guangzhou, Cairo, Amman, Coral Bay, Athens, Chania, Maleme and Paros.

D. Zavos Group is one of the leading land and building development companies in Cyprus. Established in 1980, they have proudly developed a reputation for building successful leading edge residential estates and commercial projects at prime locations in Cyprus. Today the company operates offices in Limassol, Larnaca, London, Moscow, St. Petersburg and Kiev, with affiliations throughout the globe.





World Class Architects

Benoy are an internationally-acclaimed, award-winning architects, masterplanners, interior and graphic designers. Working across its global offices, the practice has designed projects in over 80 countries where it has completed some of the world's most significant developments including Ferrari World Abu Dhabi, Westfield London, The Beach in Dubai, Cali City in Colombia, Changi Airport in Singapore and Parc Central in Guangzhou, China.

UDS architects antoniades+eleftheriou, founded in 1996 by Pavlos Antoniadis and Andreas Eleftheriou, has its main offices in Limassol. The practice works on commercial, residential, resort and mixed use development projects in Cyprus, providing full architecture, masterplanning and construction supervision services. UDS has worked closely with the Benoy masterplanners for Limassol Del Mar.

Benoy 

Engineered for Success

The concept design for both the structure and the environmental services was provided by BurroHappold. The detailed structural analysis together with the construction drawings are provided by ASD Hyperstatic Engineering whereas the detailed environmental services design and construction drawings by Unemec. The vision was to develop a high performance structural frame to act as armature for the architecture while minimising the embodied energy. The concept environmental services strategy is designed to deliver exceptional living standards while reducing the environmental impact by working in harmony with the climate and harnessing renewable resources. Digital design techniques were used to optimise the thermal performance of the building envelope while taking maximum advantage of the daylight opportunities and views of the coast to create inspirational internal spaces.

BUROHAPPOLD
ENGINEERING

 A.S.D. Hyperstatic Engineering Design
Civil and structural engineering

Jumbo Group

Jumbo Group is today one of the biggest and most successful company in the Italian luxury interior and furniture industry. The creative proposal developed in five different interiors collections with a varied range of styles and designs is what makes Jumbo Group unique in its field. Innovation, craftsmanship, high quality of materials and attention to details are the main company values and the pillars that make the Group one of the leaders in a sector of absolute excellence such as the Made in Italy industry, contributing to the company's achievements and international recognition. Gianfranco Ferré Home is one of Jumbo Group's interior collections: a brand that inherits the DNA of the fashion Maison, expressing a contemporary, metropolitan and refined lifestyle.

JUMBO GROUP



The Benefits of Cyprus Investment Program



LIMASSOL DEL MAR

THE SIGNATURE COLLECTION

Limassol Del Mar offers you the chance to acquire an address in the heart of Cyprus' most desired region. An address that exudes prestige and represents the pinnacle of achievement.

By investing in a residence at Limassol Del Mar you will have the opportunity to benefit from the Cyprus Investment Programme, which encourages high net worth individuals to settle and do business in Cyprus.

THE BENEFITS OF THIS INCLUDE:

You can travel, live, work and study anywhere in the European Economic Area (European Union, Iceland, Liechtenstein and Switzerland)

Examination period of citizenship applications under the Program: 6 months

The whole family may obtain the Citizenship

Travel to 155+ countries visa free

Cyprus allows dual citizenship

Book Your Private Appointment

If you would like to know more about Limassol Del Mar and the unique lifestyle and benefits it offers, please get in touch:

117-123, Georgiou A' Avenue,
P.O. BOX 54344, 3723
Limassol, Cyprus

T +357 25 510 888

F +357 25 510 880

E info@limassoldelmar.com

limassoldelmar.com



EXCLUSIVE SEAFRONT LIVING

The information in this brochure is indicative and is intended to act as a guide only, the finished product may vary from the information provided. These particulars should not be relied upon as statements of fact or representations and applicants must satisfy themselves by inspection or otherwise as to their correctness. This information does not constitute a contract or warranty. The dimensions given on plans are subject to minor variations and are not intended to be used for carpet sizes, appliance sizes or items of furniture. Limassol Del Mar is a marketing name and will not necessarily form part of the approved postal address. Computer generated images are indicative only. Design by Four Communications.



FURNISHED BY

GIANFRANCO
FERRE
HOME