



# krielpark

MANSIONS



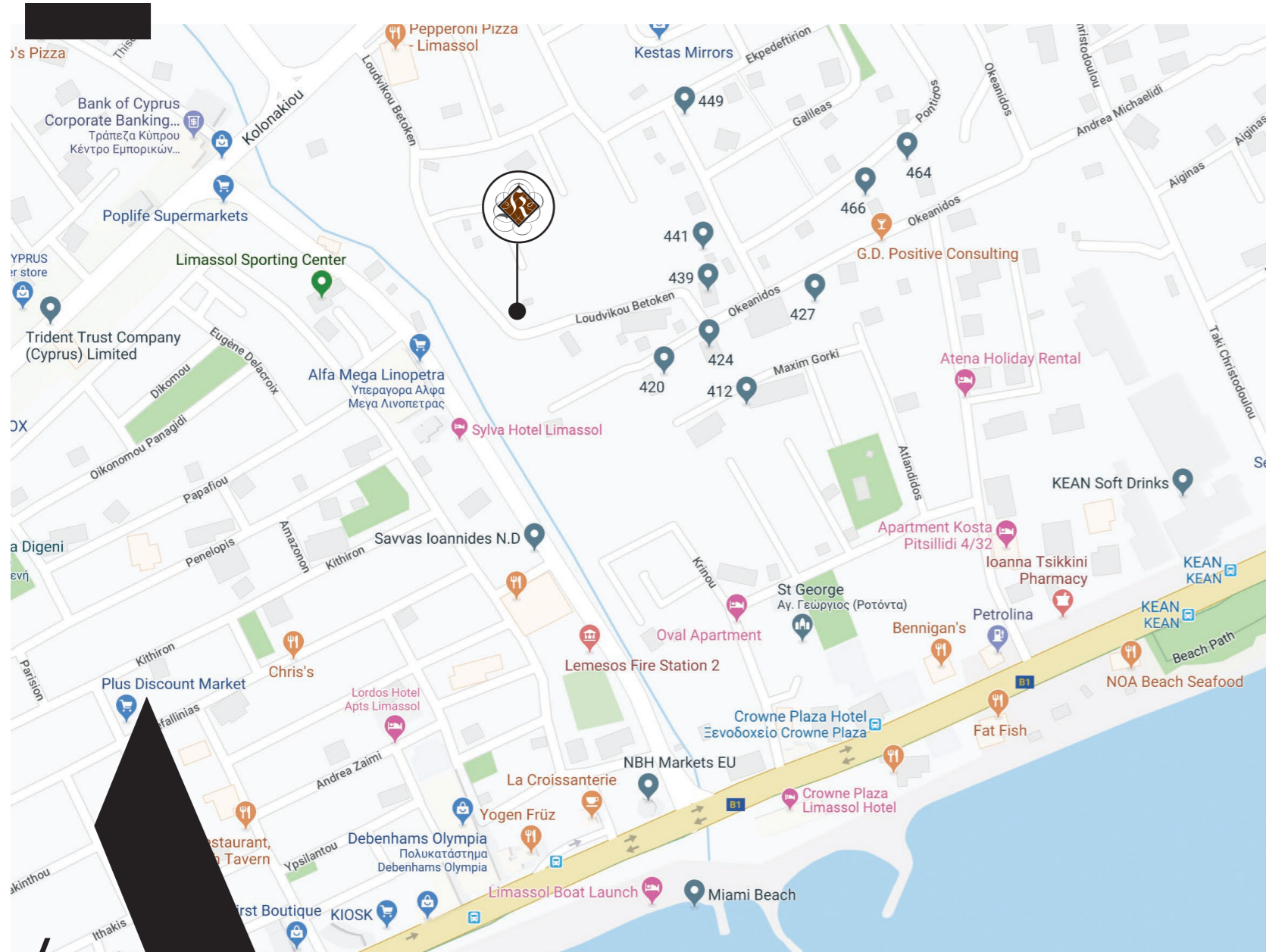
MINIMALISTIC

GLAMOUR MEETS

ECO-FRIENDLY

CHIC





### A MODERN CITY LIFE

Situated in a lively neighborhood in the heart of Limassol's bustling city center, and a mere stone's throw from the blue flag beaches for which the island is famous, the Kriel Park Mansions are a collection of green homes, ideally located to capture the allure of the coastline while never being too far from the action. A cluster of five maisonettes,

these spacious, modern 3 and 4 bedroom residences make up the ideal home for a family looking to enjoy all that Limassol has to offer. All amenities are within easy access, including public and private schools, supermarkets, and bus routes, while vibrant nightlife and high-quality cafés, restaurants and parks abound.



SITUATED IN A LIVELY  
NEIGHBORHOOD IN THE HEART  
OF LIMASSOL.



EXUDING A WARM AND  
CAREFREE ELEGANCE, EACH  
STUNNING ECO-FRIENDLY  
RESIDENCE BOASTS A UNIQUE  
IDENTITY.

M



GREEN HOUSE

### MINIMALISTIC GLAMOUR

The Kriel Park Mansions are an exciting new development of luxury living spaces. This delightful collection of five 3 and 4 bedroom maisonettes are sprawled out enough to allow for maximum comfort and privacy, yet are close enough together to create an environment of community and kinship.

In order to reduce their environmental footprint, the maisonettes also feature photovoltaic solar energy and a number

of other features which ensure that each residence is a green home.

Exuding a warm and carefree elegance, each stunning eco-friendly residence boasts a unique identity, with exteriors of fair faced concrete, stone cladding and geometric wood panelling working harmoniously together to create a façade of varying textures and contemporary, stylish glamor.

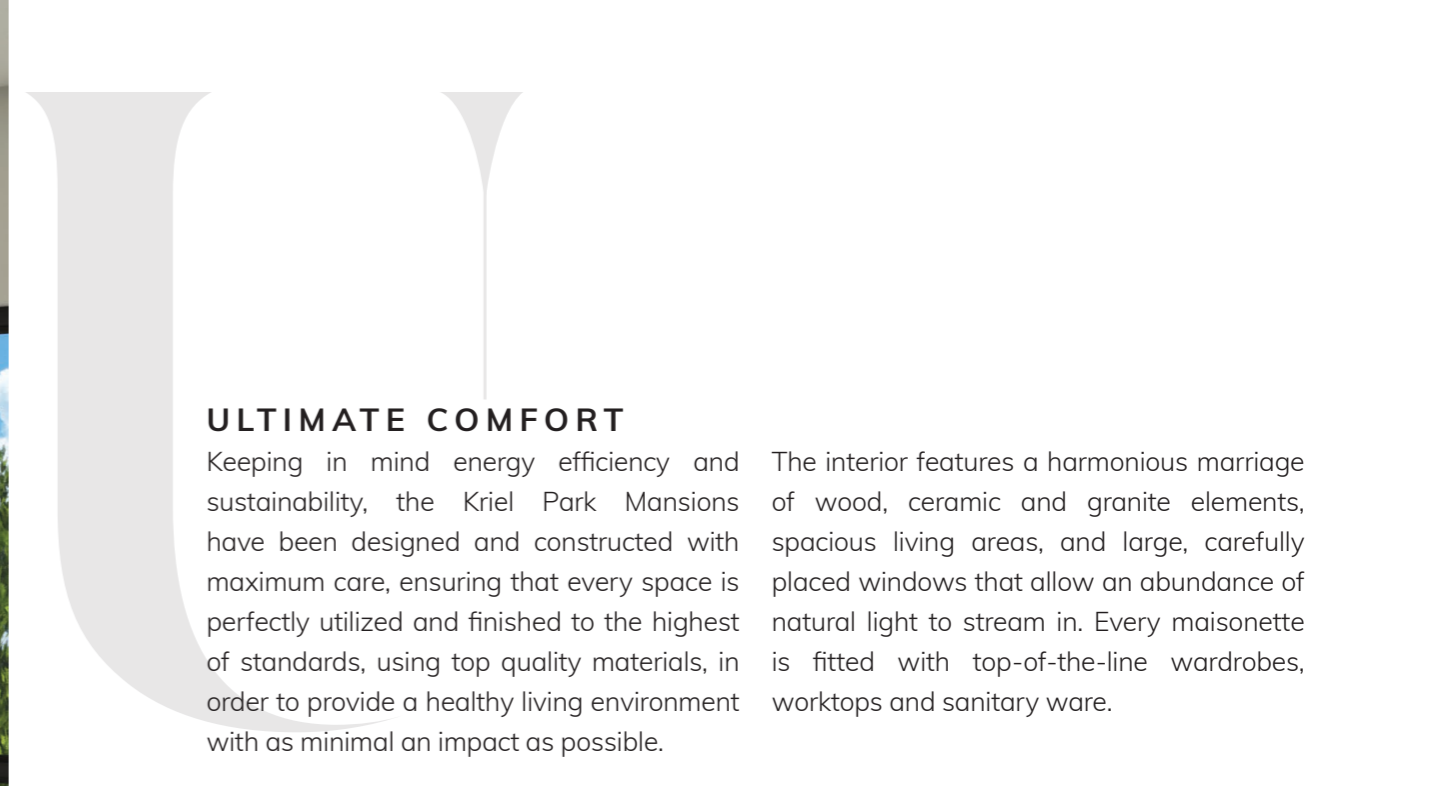


2

3



**THE MAISONETTES ALSO FEATURE  
PHOTOVOLTAIC SOLAR ENERGY, ENSURING  
THAT EACH RESIDENCE IS A GREEN HOME.**



## **ULTIMATE COMFORT**

Keeping in mind energy efficiency and sustainability, the Kriel Park Mansions have been designed and constructed with maximum care, ensuring that every space is perfectly utilized and finished to the highest of standards, using top quality materials, in order to provide a healthy living environment with as minimal an impact as possible.

The interior features a harmonious marriage of wood, ceramic and granite elements, spacious living areas, and large, carefully placed windows that allow an abundance of natural light to stream in. Every maisonette is fitted with top-of-the-line wardrobes, worktops and sanitary ware.



## LUXURY LIVING SPACE

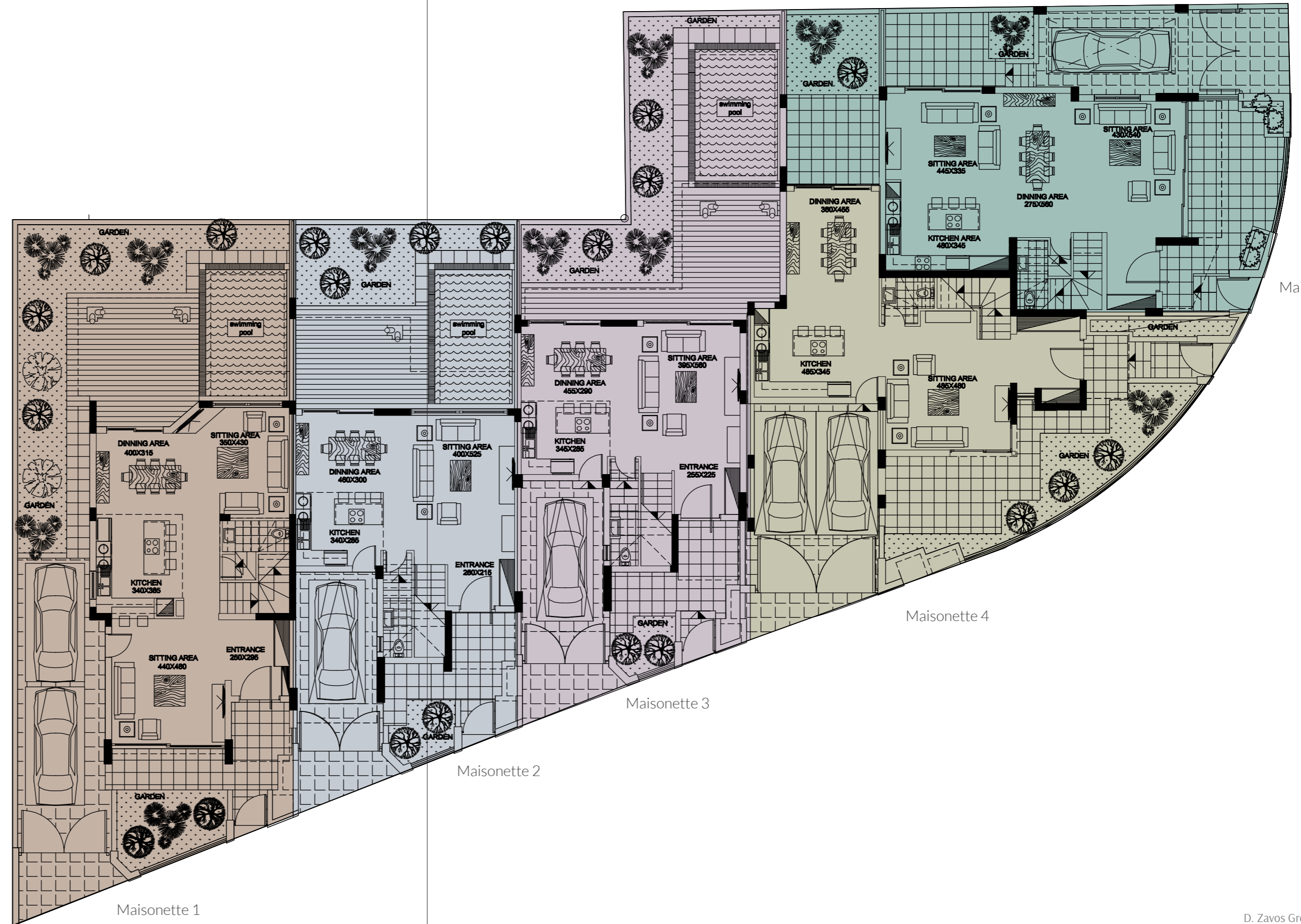
The Kriel Park Mansions are a total of five maisonettes, with two floors each. Two of the maisonettes feature four bedrooms, 3 of which are en-suite, while the remaining three comprise three bedrooms with an en-suite master bedroom. Each maisonette boasts a beautifully landscaped garden, while three of the five feature an outdoor swimming pool secluded from view, meaning that residents can simply kick back and relax in the privacy of their own home. As night falls, ample lighting in the exterior of each home allows for a safe and comfortable environment.



RESIDENTS CAN SIMPLY  
KICK BACK AND RELAX  
IN THE PRIVACY OF  
THEIR OWN HOME.



**GROUND  
FLOOR**



Maisonette 5

Maisonette 4

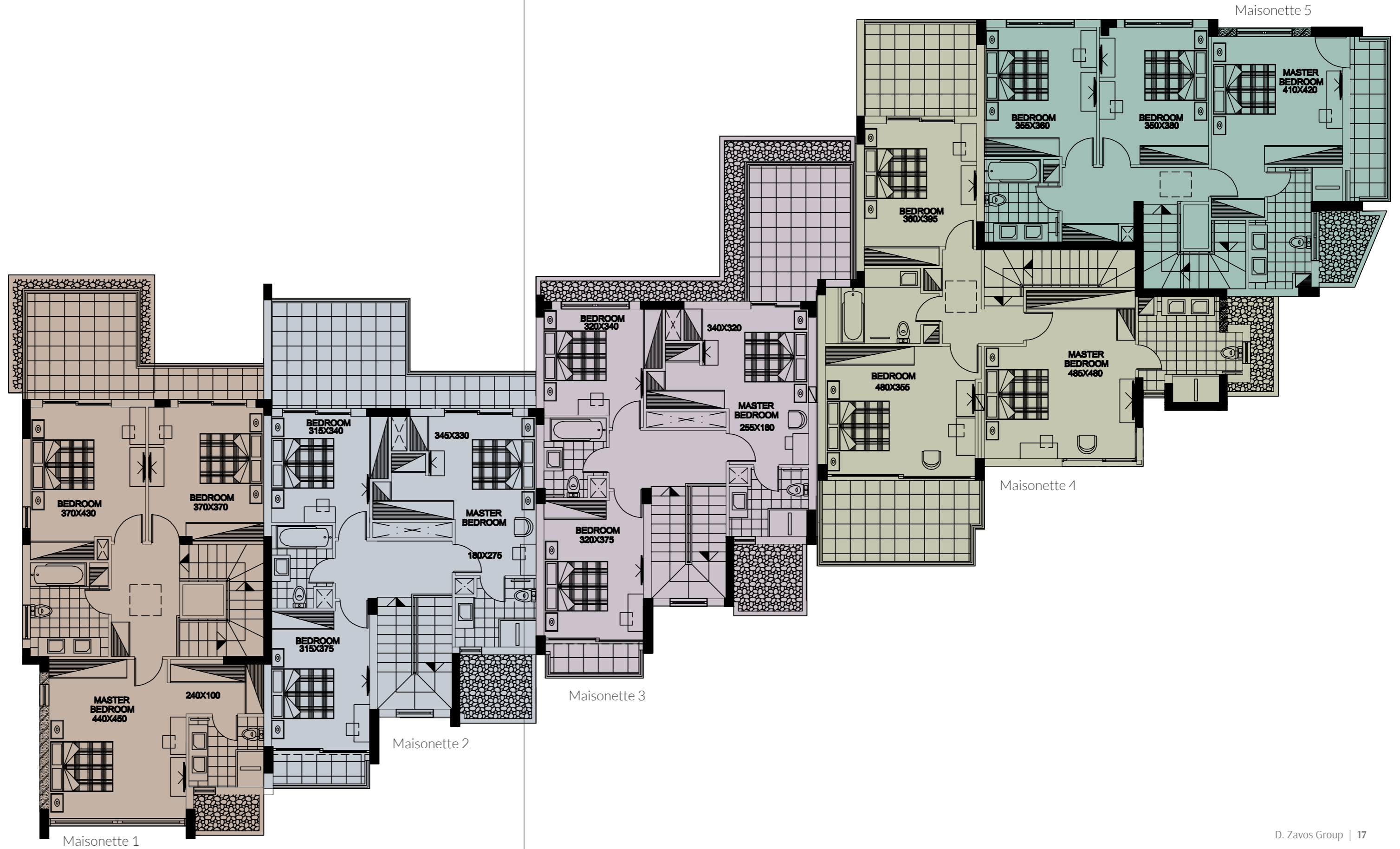
Maisonette 3

Maisonette 2

Maisonette 1



FIRST FLOOR



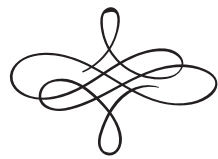


GREEN HOUSE



ZAVOS  
EXCLUSIVE  
PROPERTIES

BY D. ZAVOS GROUP



**KRIEL**  
luxury living

1 Grivas Dighenis Avenue, Zavos Kriel Court, 3035 Limassol, Cyprus  
Tel: 00357 25 818555 | Fax: 00357 25 818550  
Email: sales@zavos.com info@zavos.com  
www.zavos.com



GREEN HOUSE

The information in this brochure is indicative and is intended to act as a guide only, the finished product may vary from the information provided. These particulars should not be relied upon as statements of fact or representations and applicants must satisfy themselves by inspection or otherwise as to their correctness. This information does not constitute a contract or warranty. The dimensions given on plans are subject to minor variations and are not intended to be used for carpet sizes, appliance sizes or items of furniture. Kriel Park Mansions is a marketing name and will not necessarily form part of the approved postal address. Computer generated images are indicative only.